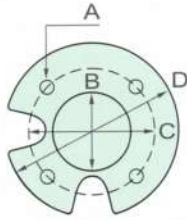


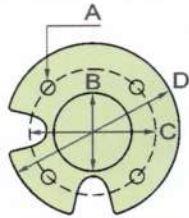
# AC Series 50HZ

## 10" STAINLESS STEEL SUBMERSIBLE PUMPS FOR DEEP WELLS



A:  $\phi$  14.68mm  
 B:  $\phi$  76.15mm  
 C:  $\phi$  111.0mm  
 D:  $\phi$  137.0mm

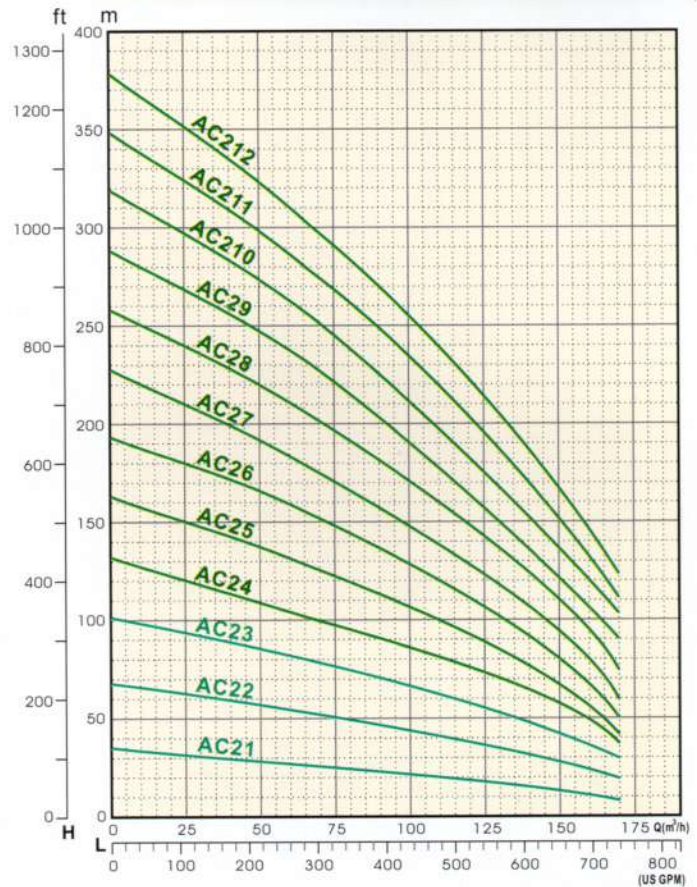
**6" MOTOR**



A:  $\phi$  19.0mm  
 B:  $\phi$  127.0mm  
 C:  $\phi$  152.4mm  
 D:  $\phi$  195.5mm

**8" MOTOR**

### PERFORMANCE CURVES



### SPECIFICATION

TYPE	STAGES	MOTOR		DIMENSION			HEAD(M). CPACITY(GPM)				WEIGHT (kg)
		KW	HP	L	L1	L2	STANDER		MAX		
							H	C	H	C	
10"	AC 21	11	15	478	210	205	21	435	35	740	36
	AC 22	18.5	25	648	210	205	43	435	68	740	54
	AC 23	30	40	818	210	205	66	435	102	740	72
10"	AC 24	37.5	50	988	210	205	86	435	132	740	90
	AC 25	45	60	1158	210	205	106	435	163	740	108
	AC 26	55	75	1328	210	205	128	435	193	740	126
	AC 27	64	85	1498	210	205	148	435	227	740	144
	AC 28	75	100	1668	210	205	170	435	258	740	162
	AC 29	82.5	110	1838	210	205	191	435	288	740	180
	AC 210	90	120	2008	210	205	212	435	318	740	198
	AC 211	105	140	2178	210	205	234	435	347	740	216
	AC 212	110	150	2348	210	205	255	435	377	740	234